

## ONE YEAR LIMITED WARRANTY

This SKUTCH PRODUCT is warranted against defects for a period of one (1) year from the date of original invoice. Within this period, we will repair the PRODUCT without charge for parts and labor. To obtain warranty service the product must be returned, at the customer's expense, to SKUTCH Electronics along with a copy of the original invoice. After the unit has been repaired, SKUTCH will ship the PRODUCT back via UPS GROUND service at our expense, ONLY within the Continental United States. If any other form of return shipment is requested, the customer will pay for 100% of the shipping cost.

This Warranty does not apply if in the sole opinion of SKUTCH Electronics, the product has been damaged by lightning or any other Acts of God, or by accident, misuse, neglect, or improper packing, shipping, modification or servicing by other than an authorized SKUTCH Service Center.

EXCEPT AS SPECIFICALLY PROVIDED IN THIS AGREEMENT, THERE ARE NO OTHER WARRANTIES, EXPRESSED OR IMPLIED, INCLUDING, BUT NOT LIMITED TO, ANY IMPLIED WARRANTIES OR MERCHANTABILITY OR FITNESS FOR A PARTICULAR PURPOSE AND IN NO EVENT SHALL SKUTCH ELECTRONICS BE LIABLE FOR LOSS OF PROFITS OR BENEFITS, INDIRECT, SPECIAL, CONSEQUENTIAL OR OTHER SIMILAR DAMAGES ARISING OUT OF ANY BREACH OF THIS WARRANTY OR OTHERWISE.

Telephone  nHold.com  
1-866-359-4653

Music On Hold, Messages On Hold, Commercials On Hold by TelephoneOnHold.com

# SKUTCH

“Telecommunication Products to solve Telecommunication Problems”

## EX-704-2 STAR Tone Activated Promotion-On-Hold Module (Two Line) Version 1.01



SKUTCH ELECTRONICS, INC.

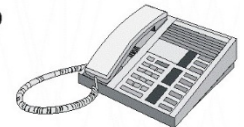
209 Kenroy Lane, Suite #9

Roseville, CA 95678

Voice: 916-786-6186 Fax: 916-783-1909

E-mail: [orders@skutchelectronics.com](mailto:orders@skutchelectronics.com)

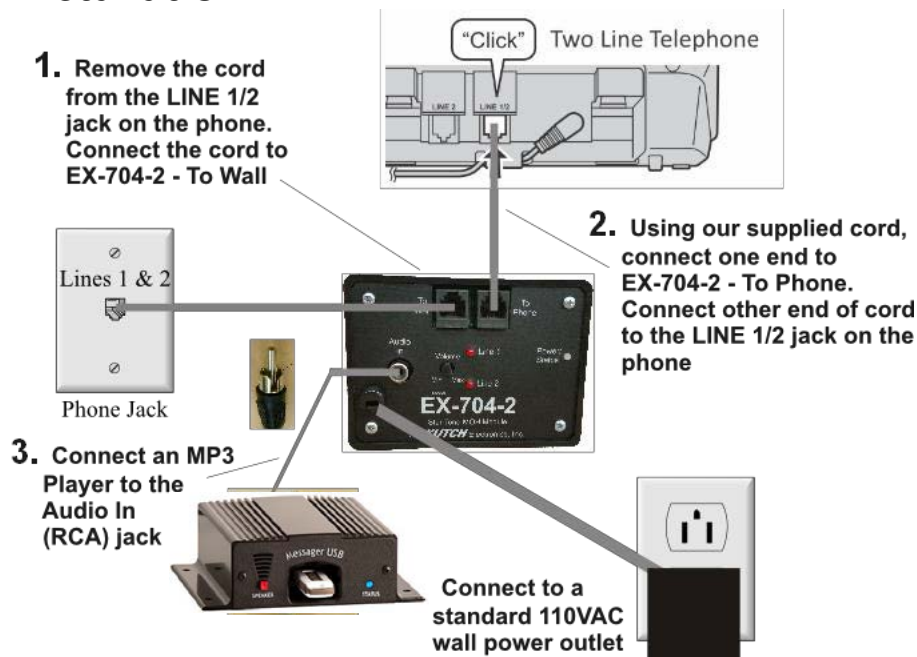
Home Page: <http://www.skutchelectronics.com>



## Introduction

Thank you for purchasing the Skutch EX-704-2 Promotion-On-Hold Module. This module adds Telephone On Hold music on hold capability to your existing analog phones. The EX-704-2 can be installed on any telephone you wish. Once installed, all phones, connected to these lines, can activate the EX-704-2 module. The Telephone On Hold call can be answered from any phone. The EX-704-2 is simple to use and is compatible with almost every make and model of analog telephone. The EX-704-2 module is supplied with 2 telephone line cords, an audio cord and an audio adapter (which is not used in most cases); the Telephone On Hold music on hold audio source is **NOT** included.

## Installation



TelephoneOnHold.com  
1-866-359-4653

Music On Hold, Messages On Hold, Commercials On Hold by TelephoneOnHold.com

## Operation

**To place a call on-hold** - Press the **STAR Touch Tone** button on your telephone, then press the **HOLD** button.

**To answer a holding call** - Press the desired LINE button, pick up the HANDSET and press the **STAR Touch Tone** button.

### Using STAR for other functions (voice mail).

If you need the *Star* button for other telephone functions, use one of these methods.

**METHOD 1:** Hold down the *Star* key for 3 full seconds and the EX-704-2 will not activate.

**METHOD 2:** Call the voice mail number then enter # \*; this disables ALL tone detection for 1 minute. The 1-minute timer restarts every time you press any tone within this time.

**METHOD 3:** If you rarely use the # tone, change it to Pound to Activate mode shown below.

### Power/Status light on the EX-704-2

Steady GREEN when powered up, turns RED while receiving a touch tone on any line.

### Line lights on the EX-704-2

**STEADY ON-** Indicates that the promotion-on-hold music is connected to the telephone line.

**POWER UP-** On initial power up, both LINE lights will flash three times.

### Tech Support (916) 786-6186

If you are unable to get your EX-704-2 operational, feel free to call for technical support. Tech support is available from 7:30 AM to 4:30 PM Pacific Time, Monday – Friday.

#### Setup Codes:

####1 = Star to Activate - DEFAULT

####2 = Pound to Activate

####5 = NORMAL Mode

####6 = Star HOLD Mode - DEFAULT

After entering a Setup Code, the audio pulsates, with a confirmation tone, the same number of times as the Setup Code; 1, 2, 5 or 6.