

ONE YEAR LIMITED WARRANTY

This SKUTCH PRODUCT is warranted against defects for a period of one (1) year from the date of original invoice. Within this period, we will repair the PRODUCT without charge for parts and labor. To obtain warranty service the product must be returned, at the customer's expense, to SKUTCH Electronics along with a copy of the original invoice. After the unit has been repaired, SKUTCH will ship the PRODUCT back via UPS GROUND service at our expense, ONLY within the Continental United States. If any other form of return shipment is requested, the customer will pay for 100% of the shipping cost.

This Warranty does not apply if in the sole opinion of SKUTCH Electronics, the product has been damaged by lightning or any other Acts of God, or by accident, misuse, neglect, or improper packing, shipping, modification or servicing by other than an authorized SKUTCH Service Center.

EXCEPT AS SPECIFICALLY PROVIDED IN THIS AGREEMENT, THERE ARE NO OTHER WARRANTIES, EXPRESSED OR IMPLIED, INCLUDING, BUT NOT LIMITED TO, ANY IMPLIED WARRANTIES OR MERCHANTABILITY OR FITNESS FOR A PARTICULAR PURPOSE AND IN NO EVENT SHALL SKUTCH ELECTRONICS BE LIABLE FOR LOSS OF PROFITS OR BENEFITS, INDIRECT, SPECIAL, CONSEQUENTIAL OR OTHER SIMILAR DAMAGES ARISING OUT OF ANY BREACH OF THIS WARRANTY OR OTHERWISE.

TelephoneOnHold.com
1-866-359-4653

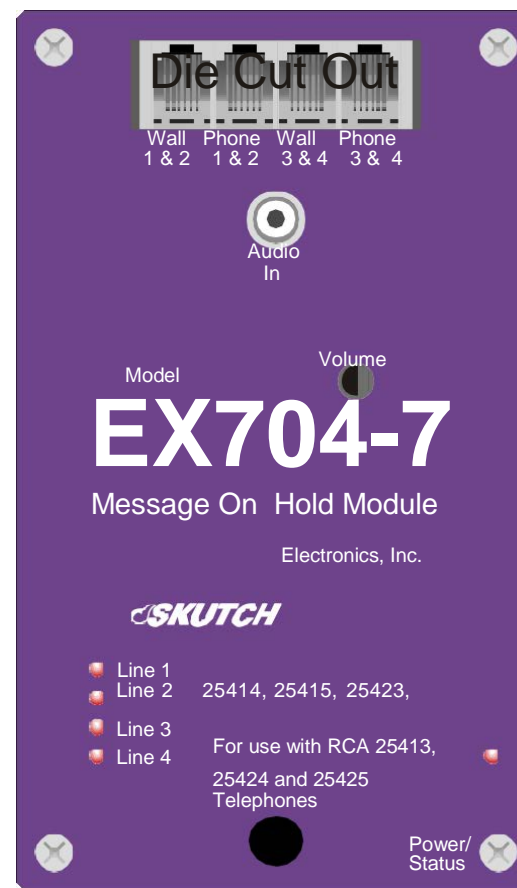
Music On Hold, Messages On Hold, Commercials On Hold by TelephoneOnHold.com

SKUTCH ELECTRONICS, INC.
209 Kenroy Lane, Suite #9
Roseville, CA 95678
Voice: 916-786-6186 Fax: 916-783-1909
E-mail: orders@skutchelectronics.com
Home Page: <http://www.skutchelectronics.com>



EX-704-7

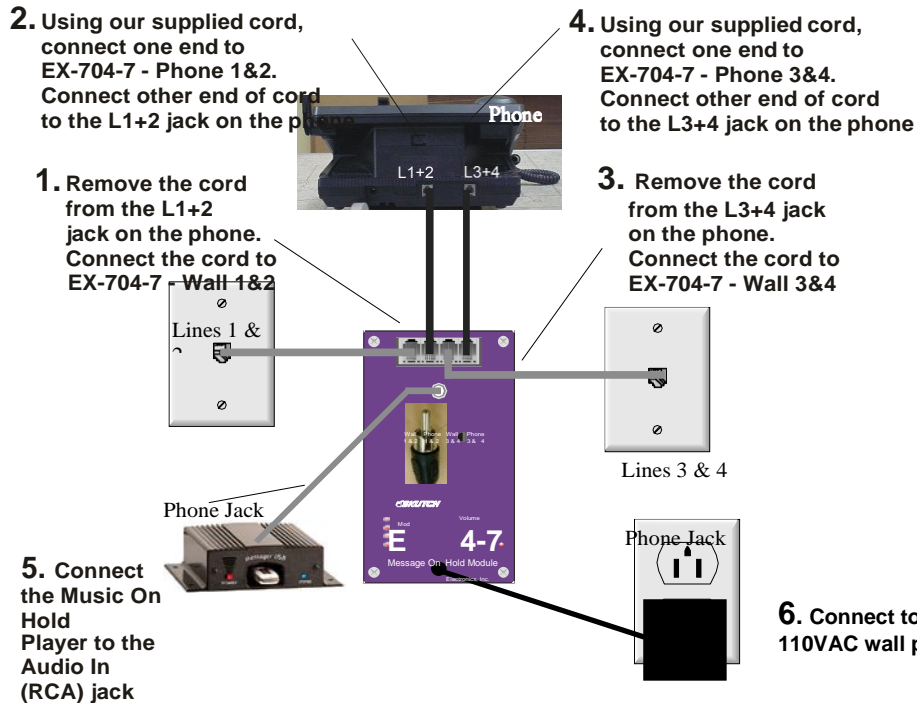
Promotion-On-Hold Module for RCA 25403, 25404, 25413, 25414, 25415, 25423, 25424 and 25425 phones (Four Line) Version 1.00



Introduction

Thank you for purchasing the Skutch EX-704-7 Promotion-On-Hold Module. This module was designed to add music on hold capability to the following phones: RCA 25403, 25404, 25413, 25414, 25415, 25423, 25424 and 25425. The EX-704-7 can be installed on any one of the phones and will provide Telephone On Hold music on hold audio to all compatible phones that are connected to the same telephone lines. When calls are placed ON HOLD, the EX-704-7 automatically connects audio from the Telephone On Hold music on hold source to the telephone line. When the call is taken OFF HOLD, the Telephone On Hold audio is disconnected. The EX-704-7 module is supplied with 2 telephone line cords, an audio cord and an audio adapter (which is not used in most cases); the Telephone On Hold music on hold source is **NOT** included.

Installation



Operation

Simply place a call on hold and the corresponding light on the EX-704-7 will activate and your Telephone On Hold message will be playing to your customer. When you pick up the “Holding” line, from any phone, the EX-704-7 will automatically stop.

Volume Adjustment

The volume of the Telephone On Hold music on hold audio can be adjusted on either the EX-704-7, or the Telephone On Hold external music on hold source. The volume on the EX-704-7 should be set to about 25%.

Power/Status light on the EX-704-7

Steady RED when powering up, then steady GREEN when ready to go.

Line lights on the EX-704-7

STEADY ON- Indicates that the Telephone On Hold promotion-on-hold music is connected to the telephone line.

POWER UP- On initial power up, all four lights will flash three times.

Audio Cutoff Problems

If the audio volume is adjusted too loud, it could cause the audio to cut off in the middle of a hold cycle or cause the audio to keep playing when the call is taken OFF HOLD. In these cases, simply turn down the audio level.

Tech Support (916) 786-6186

If you are unable to get your EX-704-7 operational, feel free to call for technical support. Technical support is available from 7:30 AM to 4:30 PM Pacific Time, Monday – Friday.

TelephoneOnHold.com
1-866-359-4653